



Configuration Instructions for *Midcoast Internet* for a Macintosh computer running OS-X

Step 1)

First, click the Apple menu in the upper left-hand corner, and select System Preferences. (See Figure 1.)



Figure 1

Step 2)

The System Preferences window will open. Click the Network icon. (Shown in Figure 2.)



Figure 2

Step 3)

When the Network window opens, it will usually be on the TCP/IP tab, like Figure 3. While on the TCP/IP tab, use the pull down menu for Configure, and select PPP. The IP Address, Subnet Mask, and Router fields will all switch to “Provided by PPP server.” In the box labeled Domain Name Servers, type the numbers 10.0.0.1. In the Search Domains box, put midcoast.com, just as shown in Figure 3. *These are not optional*, even though OS-X says they are.



Figure 3

Step 4)

Then, click the PPP tab. Set the Location drop-down menu to “Automatic.” Set the Show drop-down menu to “Internal Modem.” (See Figure 4.) In the Service Provider field, type MIS, or Midcoast, or whatever you choose—it doesn’t really matter. In the Telephone Number field, type the phone number you use to connect to MIS’ modems. *Make sure the number you choose is a local call for you! We will not be responsible for long distance phone bills to an incorrectly configured phone number.* In the Alternate Number field, you can choose an alternate MIS number for dialing. *Again, make sure that number is a local call for you.* In the account name field, type your complete Midcoast address—all lowercase, with no spaces. Type your MIS password in the Password field. (In OS-X, the Password field will completely fill, regardless of how long your password really is.) If you would like to have your password saved, you can check the Save Password box.



Figure 4

Step 5)

Then, click the PPP Options button. Clicking the PPP Options button will give you a window like Figure 5. It is important that you uncheck the box called “Use TCP header compression” in the Advanced Options area. The other boxes in the Advanced Options area you shouldn’t need to touch it—it should look just like the bottom area of Figure 5. The upper portion of the window (Session Options) contains options you may choose to leave on or off. We would recommend you shut them all off for best performance. Then, click the OK button, and you will be back to the PPP window, as in Figure 4.

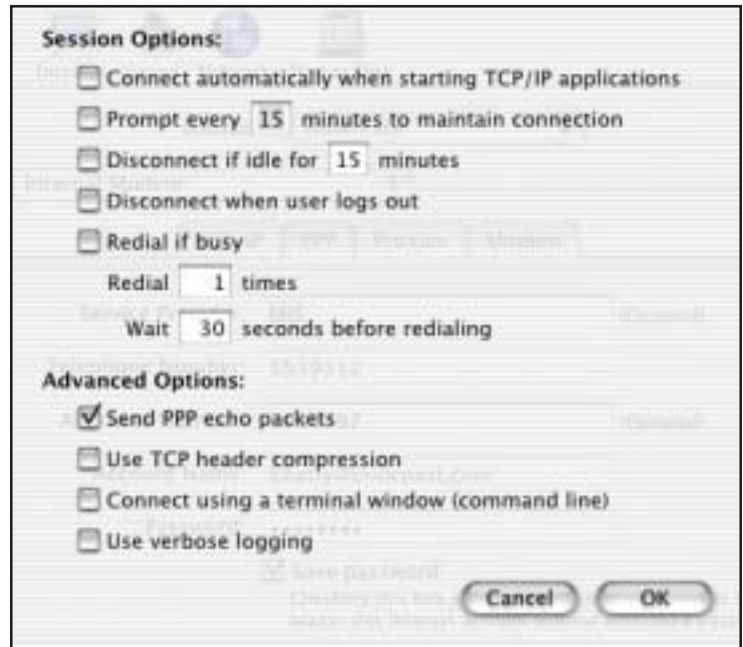


Figure 5

Step 6)

Click the Modem tab, and your window will look as Figure 6. Nothing should need to be changed here. It should look just like Figure 6 below. (If, however, you have had a different modem installed than the one that came with your Mac, then you should select your new modem using the Modem pull-down menu.) Click the “Apply Now” button.

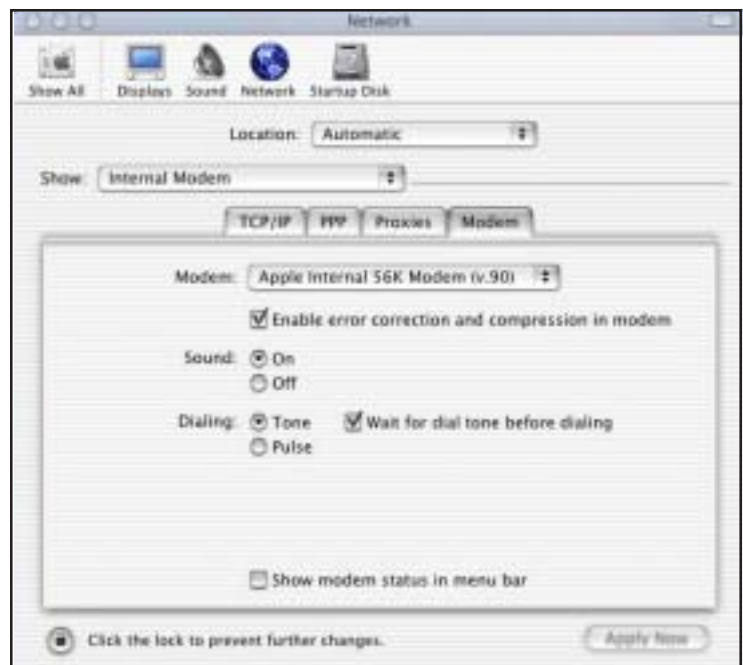


Figure 6

Step 7) Optional!

If you would like to use the MIS proxy server (optional), then click the Proxies tab as in Figure 7. Otherwise, click the red X in the upper left-hand corner, and skip to Step 8 now. Check the FTP Proxy, Web Proxy (HTTP), and Secure Web Proxy boxes. Type 10.0.0.3 in the long boxes, just as in Figure 7. In the Port fields, put 8080. No other Proxy buttons need to be checked. Click “Apply Now.” Close the window using the red X in the upper left hand corner.



Figure 7

Step 8)

Double click your Mac hard drive icon on your desktop. (Figure 8)



Figure 8

Step 9)

Open the Applications folder, like Figure 9.

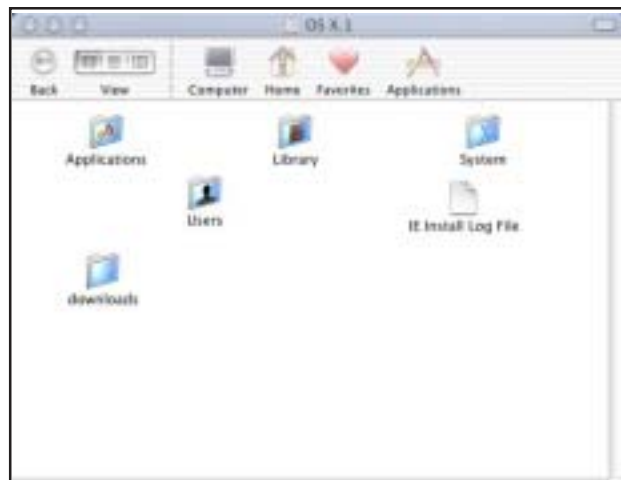


Figure 9

Step 10)

Within the Applications Folder, you will find the Internet Connect application, as in Figure 10. Open it.

(**Optional step:** If you would like to place a connection icon on your desktop, highlight the Internet Connect icon by clicking it just once. Then, go to the File menu in the far upper left of your screen, and choose “Make Alias.” You can then drag the alias to the desktop or the Dock.)



Figure 10

Step 11)

You will see as in Figure 11. Your username and password should already be filled in, as is the phone number. Click Connect. Now you are on-line and ready to open the software you wish to use.



Figure 11

Please note that the software is provided free of charge and comes without any warranties of any kind. Please read all appropriate information provided by the software manufacturer prior to installing any software.

Installing the software.

In most cases the installation of the software provided on the MIS CD-ROM will be a simple matter of double-clicking the installer icon. In a few minor cases (when no installer icon is present) the installation is a simple matter of dragging and dropping the program folder. The installer icons will look similar to the ones pictured below.



Installer Icons



Note: In all cases it is recommended that any new software be installed with “extensions off.” When any installation is complete it is recommended that you restart your machine and “rebuild the desktop.” These steps can greatly reduce or prevent software conflicts that can occur due to improper installation (extensions on) or extensions conflicts.

The following pages contain configuration instructions for some of the basic Internet software included on in Midcoast Internet Solutions (Macintosh) CD-ROM.

Step 12)

First, double click the CD icon. You will see a folder called “OS-X Applications,” as shown in Figure 12. Open it.

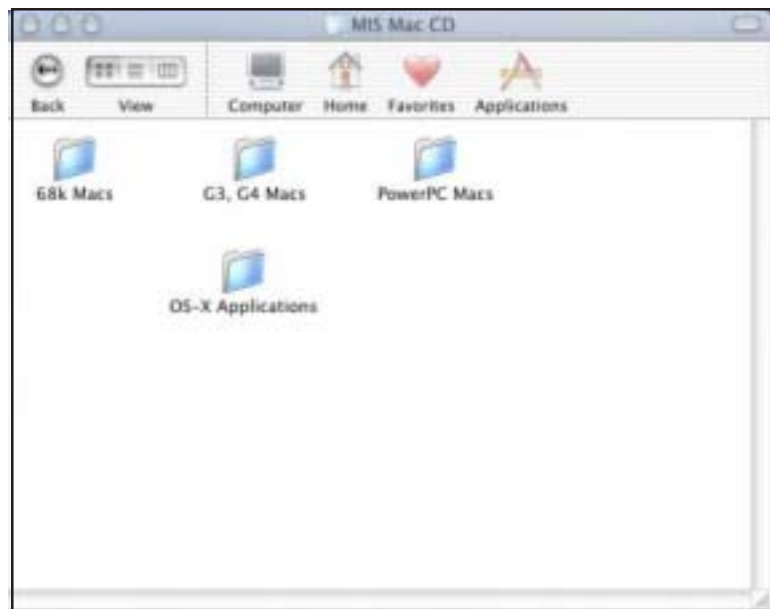


Figure 12

Step 13)

Within the OS-X Folder, you will see folders, as in Figure 13. If you would like to install any of the software, open the applicable folder, and double click the installer icon inside.



Figure 13